



# PATHARI STONES

*Where Nature Becomes Craft*

---

# Contents

- Introduction | 2
- Sustainable Mining Approach | 3
- Sandstone Range, Cuts & Dimensions | 4
- Pathari Stone Series | 5
- Stone Veneer | 12
- Insights | 14



# Introduction

Sandstone is one of nature's most versatile and enduring materials, formed over millions of years from compacted sand and minerals. Known for its strength, durability, and timeless beauty, sandstone has been used in architecture and design across the world — from ancient monuments to modern landscapes. Its natural variation in color, texture, and finish makes it a preferred choice for construction, paving, cladding, and decorative applications. Combining aesthetic appeal with long-lasting performance, sandstone is a true reflection of nature's craftsmanship.



Sandstone is prized for its durability, natural beauty, and versatility, making it suitable for a wide range of uses in architecture and design. Some of its most common applications include:

**Building & Construction** – Used as blocks, slabs, and cladding for walls, facades, and pillars.

**Flooring & Paving** – Ideal for outdoor pathways, courtyards, patios, and indoor flooring.

**Landscaping** – Applied in garden features, retaining walls, boundary walls, and decorative stonework.

**Monuments & Sculptures** – Valued for its workability in carving and shaping, making it popular for heritage structures.

**Interior Design** – Used in fireplaces, staircases, tabletops, and feature walls to add natural elegance.

**Roofing & Coverings** – Traditional use as roofing slabs in rural and historic architecture.



# Sustainable Mining Approach

At Pathari Stones, we believe that progress and sustainability go hand in hand. Our approach to sandstone mining is guided by a deep respect for the environment, communities, and the timeless beauty of natural stone. Every step of our process is designed to balance economic development with ecological responsibility, ensuring that the resources we harvest today remain available for generations to come.



We prioritize low-impact mining techniques that minimize disruption to the land and preserve the surrounding ecosystem. Ethics are at the core of our operations. All sandstone is sourced under strict compliance with labor and safety standards, ensuring fair treatment, proper working conditions, and respect for human rights. Transparency and accountability are integral, giving our clients the confidence that every block of sandstone is responsibly sourced.



# Sandstone Range, Cuts & Dimensions:

- Pathari Ash
- Pathari Grey
- Pathari Light Mocha
- Pathari Champagne
- Pathari Fossille
- Pathari Desert
- Pathari Lily

*Custom cuts and sizes available \**

### Pavers



12" x 24"      18" x 24"      24" x 24"      36" x 24"

### Curbs



6" or 7"  
31" or 48"

2" Unfinished or Finished Edges

1" Coping

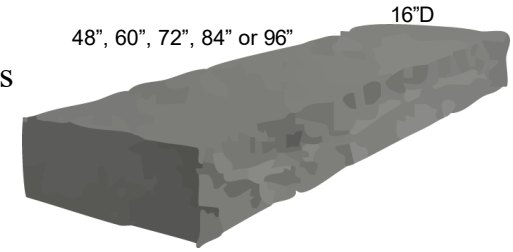


12", 14" or 16"      48", 60" or 72"



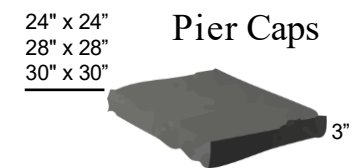
12"      48"

### Steps



48", 60", 72", 84" or 96"      16"D  
6" or 7"

### Pier Caps



24" x 24"  
28" x 28"  
30" x 30"

3"



### Jumbo Slabs Sizes | 50 mm (2") thickness

24" x 72"    24" x 60"    24" x 48"    36" x 72"    36" x 96"  
48" x 72"    48" x 96"



# Pathari Ash

**Pathari Ash** brings timeless elegance with its subtle, neutral tones and naturally smooth texture. Its understated beauty makes it a versatile choice, blending seamlessly into both modern and traditional spaces. Durable, weather-resistant, and refined, it elevates any project with a touch of sophistication.

## Uses of Pathari Ash Sandstone

**Flooring & Paving** – Popular for patios, walkways, and courtyards due to its slip-resistant surface and muted elegance.

**Wall Cladding** – Adds a modern, minimal look to both exterior and interior walls.

**Landscaping** – Ideal for garden features, steps, boundary walls, and retaining walls.

**Driveways & Pathways** – Durable and weather-resistant, making it suitable for heavy-use areas.

**Pool Surrounds** – Its cool tones and non-slippery finish make it perfect for pool decks.

**Interior Applications** – Used in staircases, feature walls, and accent flooring for contemporary interiors.

**Commercial Spaces** – Favored in offices, hotels, and public areas for its refined, neutral appearance.



# Pathari Grey

Pathari Grey offers a bold and sophisticated finish with its deep grey tones and subtle texture. Strong, versatile, and elegant, it is the perfect stone for creating contemporary designs that balance durability with style. Whether indoors or outdoors, it makes a striking statement in any setting.

## Uses of Pathari Grey Sandstone

**Flooring & Paving** – Creates a sleek, modern look for patios, terraces, and garden paths.

**Wall Cladding** – Adds a bold, contemporary edge to both exterior facades and interiors.

**Driveways & Courtyards** – Its strength and resilience make it ideal for heavy-traffic areas.

**Steps & Staircases** – Durable with a refined finish for both indoor and outdoor use.

**Pool Surrounds** – A stylish, slip-resistant choice for pool decks.

**Landscaping** – Perfect for boundary walls, feature walls, and decorative stone elements.



# Pathari Light Mocha

**Pathari Light Mocha** is celebrated for its warm, earthy hues that bring a sense of natural charm and richness to any space. Its strength and versatility make it equally suited for traditional designs and modern architecture. Durable and timeless, it adds both character and reliability to every project.

## Uses of Pathari Light Mocha Sandstone

**Flooring & Paving** – Provides warm, earthy tones for patios, courtyards, and walkways.

**Roofing** – Traditionally used as slabs for roofing, offering durability and natural insulation.

**Wall Cladding** – Enhances both interiors and exteriors with a natural, rustic appeal.

**Steps & Staircases** – Durable choice that blends strength with elegance.

**Driveways & Pathways** – Withstands heavy use while offering a timeless look.

**Landscaping** – Ideal for garden walls, decorative features, and boundary walls.

**Interior Design** – Adds warmth in fireplaces, feature walls, and accent flooring.



# Pathari Champagne

Pathari Champagne is prized for its subtle elegance and versatile neutral tones that complement any design style. Light and timeless, it brightens spaces while offering durability and strength. A perfect choice for creating refined, modern, and inviting environments indoors or outdoors.

## Uses of Pathari Champagne Sandstone

**Flooring & Paving** – Provides warm, earthy tones for patios, courtyards, and walkways.

**Wall Cladding** – Enhances both interiors and exteriors with a natural, rustic appeal.

**Steps & Staircases** – Durable choice that blends strength with elegance.

**Driveways & Pathways** – Withstands heavy use while offering a timeless look.

**Landscaping** – Ideal for garden walls, decorative features, and boundary walls.

**Interior Design** – Adds warmth in fireplaces, feature walls, and accent flooring.



# Pathari Fossille

**Pathari Fossille** is a remarkable stone that captures the history of nature within its surface, displaying distinct fossil imprints formed over millions of years. Its durability, coupled with its unique textures, makes it a favorite for both architectural and decorative applications. Each piece is one-of-a-kind, offering timeless beauty and a story carved by nature itself.

## Uses of Pathari Fossille Sandstone

**Flooring & Paving** – Adds natural charm to patios, walkways, and courtyards with its unique fossil patterns.

**Wall Cladding** – Highlights interiors and exteriors with striking textures and embedded fossil imprints.

**Steps & Staircases** – Durable and decorative, offering both strength and aesthetic appeal.

**Landscaping** – Perfect for decorative walls, boundary walls, and garden features.

**Pool Surrounds** – Brings a touch of uniqueness while offering durability in wet areas.

**Interior Applications** – Ideal for feature walls, flooring, countertops, and design accents.

**Commercial Spaces** – Popular in hotels, showrooms, and heritage-style projects for its unique fossil impressions.



# Pathari Desert

**Pathari Desert** is valued for its toughness and timeless earthy tones, making it a practical choice for both traditional and modern architecture. Known for its strength and resilience, it combines natural beauty with long-lasting performance. Whether for flooring, cladding, or landscaping, Flint Sandstone delivers durability with a classic appeal.

## Uses of Pathari Desert Sandstone:

**Flooring & Paving** – Strong and durable, suitable for patios, pathways, and courtyards.

**Steps & Staircases** – Provides strength and grip, ideal for heavy-use areas.

**Driveways & Courtyards** – Withstands pressure and traffic, maintaining its natural finish.

**Landscaping** – Perfect for boundary walls, retaining walls, and decorative stonework.

**Roofing** – Traditionally used for roofing slabs, valued for durability and insulation.

**Pool Surrounds** – Its non-slip surface and earthy look make it a practical and aesthetic choice.

**Interior Applications** – Works well for rustic feature walls, fireplaces, and flooring.



# Pathari Lily

Pathari Lily stands out for its gentle lavender and purple tones, bringing elegance and tranquility to any space. Durable and versatile, it blends beauty with performance, making it suitable for both traditional and contemporary designs. Its calming hues create refined spaces that feel both timeless and unique.

## Uses of Pathari Lily Sandstone

**Flooring & Paving** – Creates elegant patios, terraces, and courtyards with its soft lavender hues.

**Steps & Staircases** – Strong and stylish, adding a subtle touch of sophistication.

**Driveways & Pathways** – Durable enough for heavy traffic, while maintaining its refined appearance.

**Landscaping** – Ideal for garden features, decorative walls, and boundary walls.

**Pool Surrounds** – Adds beauty to pool decks while offering slip-resistant properties.

**Interior Applications** – Works beautifully in fireplaces, feature walls, flooring, and staircases.

**Commercial Spaces** – Popular in hotels, spas, and offices for its soothing and premium aesthetic.



# Slate Stone Veneer

Composition: Natural stone veneer laminated to a fiberglass/polyester resin substrate.

Slate veneer is a flexible stone veneer made of various types of laminated. Slate veneer is a revolutionary, flexible stone veneer which can be applied over nearly any solid substrate including concrete, ceramic, wood, metal, plywood, fiberglass and dry wall. Slate veneer has proven to be a superb material when a real stone finish and texture is desired, but heavy solid stone may not be practical. Slate veneer is not recommended for commercial flooring. Slate veneer is a time and labor saving product that does not require all of the standard masonry tools or methods.

Cost effective and sustainable

Design Green with Slate veneer. Because Slate veneer is extremely lightweight fuel is saved in shipping and handling when compared to standard stone or tile products. There are additional savings in packaging materials used for transport, as well. Slate veneer is also a sustainable product by utilizing only what is needed from the stone quarry. Because of the unique manufacturing process, each sheet of Slate veneer represents just a small amount of the natural stone, not the whole slab. Slate veneer can be applied to many surfaces, including: concrete, ceramic, wood, metal, plywood, fiberglass, backer board, tile, dry wall, MDF.



Stone Veneer can be used the same way thin laminate type products are used. It will bend to a minimum radius depending on the stone color or type before cracking. With the assist of heat smaller radii can be achieved. Testing should always be done prior to any natural stone veneer installation. It can be arched or bent inward or outward to meet a given look or architecture. Fiberglass strand are used in the makeup of Stone Veneer which gives it strength and flexibility. Installation can be easily done using many of the basic tools used in most tile work.



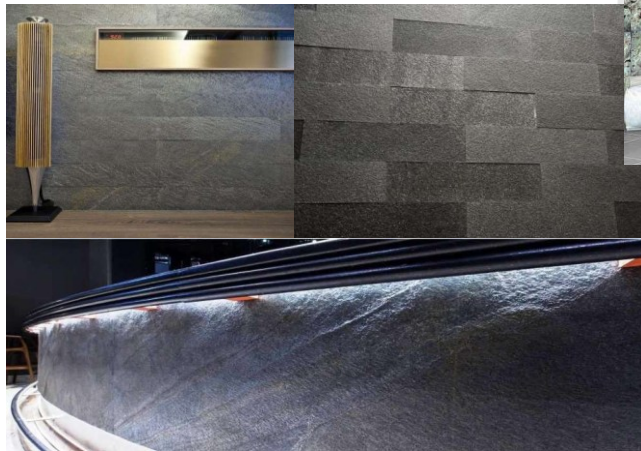
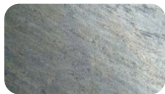
The Natural Slate Stone Veneer is hardly available in the Canadian market, but sold in European and American markets, there is a great demand and it is widely appreciated by builders, architects and consumers in residential and commercial projects, as an alternative to heavy and expensive slabs/tiles.

This product is easy and economical to install. The Slate Veneer consists of a thin, approximately 1 mm Layer of real stone with a 1 mm layer of reinforced lamination of polymer composite, which most construction grade adhesive will bond to.

Install veneer on the wall gives the perfect impression and feel of natural stone on the front and on the back side it has fiberglass/resin.

Fiberglass reinforced polyester is used in the backing, giving it durability, strength and resilience.

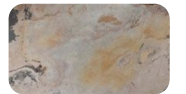
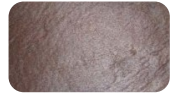
The Slate Stone Veneer can be bent with the same flexibility as any plastic sheet product.



The fiberglass backing gives it enough strength and flexibility. Thin Slate Veneer can be bent in concave and convex form, or arched or radial forms depending on the nature of the curve. Slate Stone veneer is also available in translucent and fabric backing forms; a kind of transparent and more flexible form, respectively.

This Veneer can be used in residential and commercial projects from luxurious bathrooms to stunning fireplaces, striking feature walls and uniquely textured cabinetry, it can be applied over numerous surfaces such as concrete, drywall, painted surfaces, ceramic, wood, plywood, MDF.

**"To see the beauty of natural colors and original horned texture in pictures is not possible; one has to see it in real to be stunned by its beauty."**



# Insights

At **Pathari Stones**, our journey is built on the foundation of quality, responsibility, and innovation. From responsibly mined sandstone to advanced veneer solutions, we bring together tradition and modern design to meet the diverse needs of our clients.

**Sustainability at Core** – Eco-friendly mining practices that preserve resources and minimize environmental impact.

**Diverse Range** – A wide selection of sandstone types, finishes, and veneer applications for every project.

**Custom Sizes & Design** – Tailor-made cuts, dimensions, and finishes to suit unique architectural and aesthetic requirements on request.

**Ethical Sourcing** – Every stone reflects our commitment to fair practices, safety, and community empowerment.

**Global Appeal** – Trusted in residential, commercial, and landmark projects worldwide for durability and timeless elegance.

**Pathari Stones** continues to craft natural stone solutions that not only enhance spaces but also uphold our promise of integrity, sustainability, and design excellence - with customer satisfaction at the heart of everything we do.



# PATHARI STONES

*Contacts: 416 919-1915 | 647 807-1643*

*Email: info@patharistones.com*



@patharistones